

STATE OF MINNESOTA, } ss.
COUNTY OF MURRAY, }

I hereby certify that the within Instrument
was filed in this office for record on the
30th day of AUGUST A.D. 20 19
at 9:00 o'clock A. M, and was duly
recorded as Document No. _____

Evelyn C. Larson
County Recorder

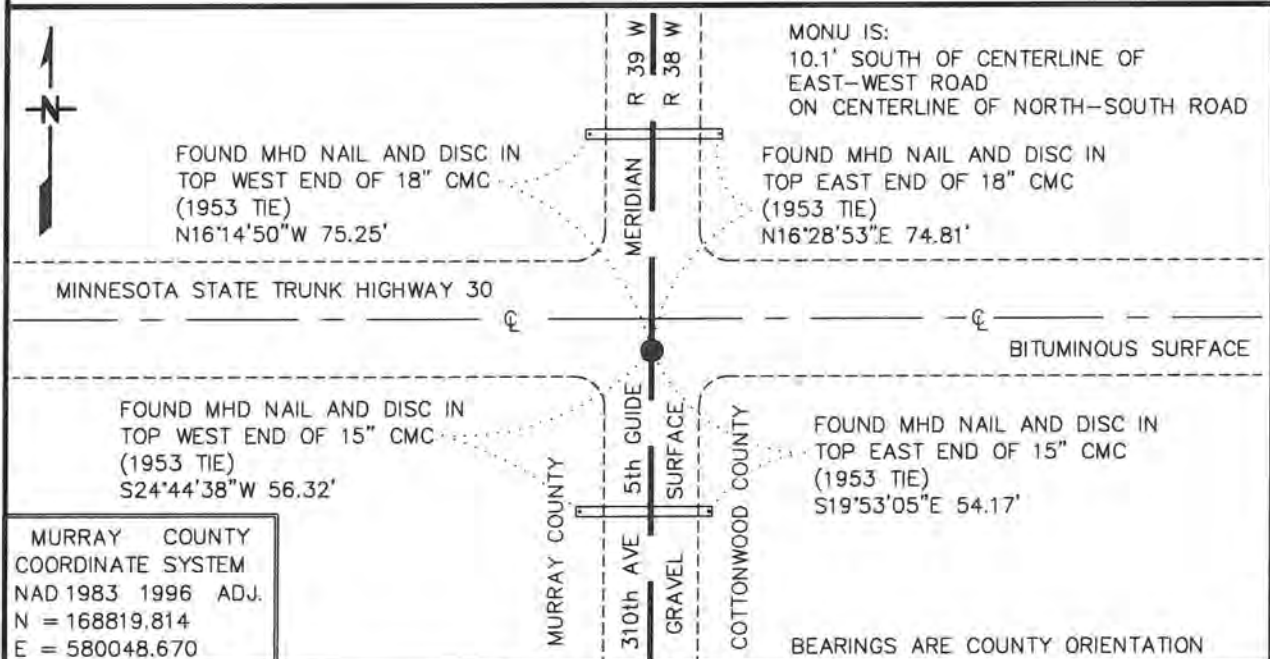
Index No. V-25

CERTIFICATE OF LOCATION OF GOVERNMENT CORNER

NORTHEAST Corner of Section 36, Township 107 N, Range 39 W
5TH Principal Meridian, State of Minnesota, County of MURRAY

At the corner location shown on the sketch:

- On 10/19/2017 found a PERFORATED STEEL TUBE WITH AN ALUMINUM CAP
DATE STAMPED "DNR SURVEY MARKER". DOWN 1.0'
 left monument as found, lowered monument, removed monument (explain)
- On _____ Placed a _____
DATE _____



Statement of evidence for this corner location is on back of this page.

APRIL 2018
WMA00745

I hereby certify that this plan, specification, or report was prepared by me or under my direct supervision and that I am a duly Licensed Land Surveyor under the laws of the State of Minnesota.

SIGNATURE

Bruce W. Shepperd
BRUCE W. SHEPPERD

DATE

8/15/19

License Number

17003

Northeast Corner of Section 36, Township 107 North, Range 39 West

1985 November, Lowell R. Pommerening Jr., PLS 17005, with the Minnesota Department of Natural Resources filed a Certificate of Location of Government Corner for this corner in the Murray County Recorder's Office.

A Certificate of Location of Government Corner for this corner was recorded on November 15, 1985 in the Cottonwood County Recorder's Office as Document No. 188937, File 173 Card 3, Microfilmed.

**FOR ADDITIONAL INFORMATION SEE THE ABOVE CERTIFICATES OF
LOCATION OF GOVERNMENT CORNER**

The DNR Division of Lands and Minerals contacted the following for survey information:

Website - mgeo.state.mn.us for GLO plat and field notes

Website - murray-countymn.com for section and quarter section corner information

Murray County Recorder's Office

Cottonwood County Recorder's Office

Zieske Land Surveying, Inc. of Windom

2017 October 19, the DNR Division of Lands and Minerals visited the area of the corner and found an aluminum cap stamped "D.N.R. SURVEY MARKER" on a perforated steel tube, down 1 foot.

Analysis of the above information led the DNR Division of Lands and Minerals to conclude that the found aluminum cap stamped "D.N.R. SURVEY MARKER" on a perforated steel tube, which was set over a capped concrete monument in 1985, marks the location of the corner. Searched for and found four record ties as shown on the sketch of reference ties.